



GEARHEADS Frame size 61mm sq. (2.4 in.sq.)

METAL TYPE & BALL BEARING TYPE

▶ **RATED TORQUE OF GEARHEAD**

MODEL	Speed(rpm)	500	300	200	120	100	60	50	30	20	15	10	9
	Ratio	50Hz	3	5	7.5	12.5	15	25	30	50	75	100	150
	60Hz	3.6	6	9	15	18	30	36	60	90	120	180	200
L6HD □ M L6HK □ B	kg-cm	1.2	2.0	3.0	5.0	6.0	8.9	10.7	16.2	24.3	30	30	30
	N-m	0.12	0.19	0.29	0.49	0.58	0.88	1.05	1.58	2.38	2.94	2.94	2.94
	oz-in	17	28	41	69	83	124	149	225	337	417	417	417

- * The normal torque is that the motor and gearhead are directly coupled.
- * Insert the denominator of reduction ratio in □ of gearhead model name.
- * Actual rotation speed is 2~15% less than synchronous speed.
- * ■Color indicates that the rotation of gearhead shaft is in opposite direction as output shaft of motor.

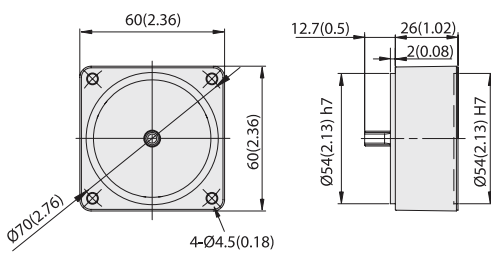
BRAKE MOTORS

DIMENSIONS

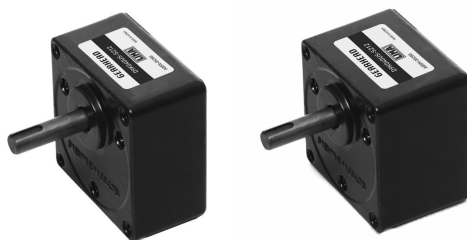
Unit : mm(inch)

DECIMAL GEARHEAD

L6G10D

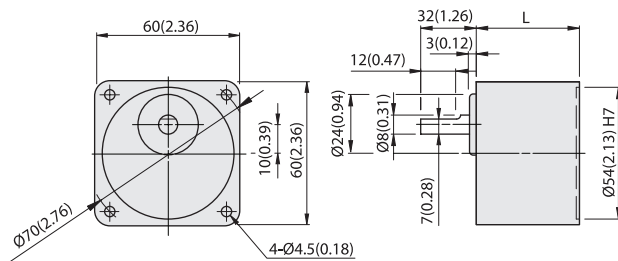


WEIGHT 0.2kg(0.44 lb)



GEARHEAD

L6HD□**M(B)**



GEAR RATIO	L		WEIGHT		BOLT
	mm	in	kg	lb	
1/3~1/18	30	1.18	0.3	0.66	M4x50
1/20~1/200	41	1.57	0.4	0.88	M4x60

L6HD□**M(B)** + **L6R6P**□**LE**

